

Homeless in Houston: We're Making a Difference



Catherine L. Troisi, Ph.D.
Associate Professor, MPACH
University of Texas School of Public Health

Gary M. Grier
Project Manager
Coalition For The Homeless of Houston/Harris
County

18 June 2014

DEFINITIONS OF HOMELESSNESS

HUD definition

- Literally homeless
 - On the streets and in encampments
 - Places not meant for human habitation: car, abandoned building, parks, and no electricity or plumbing
 - Emergency shelter, transitional housing, or safe haven

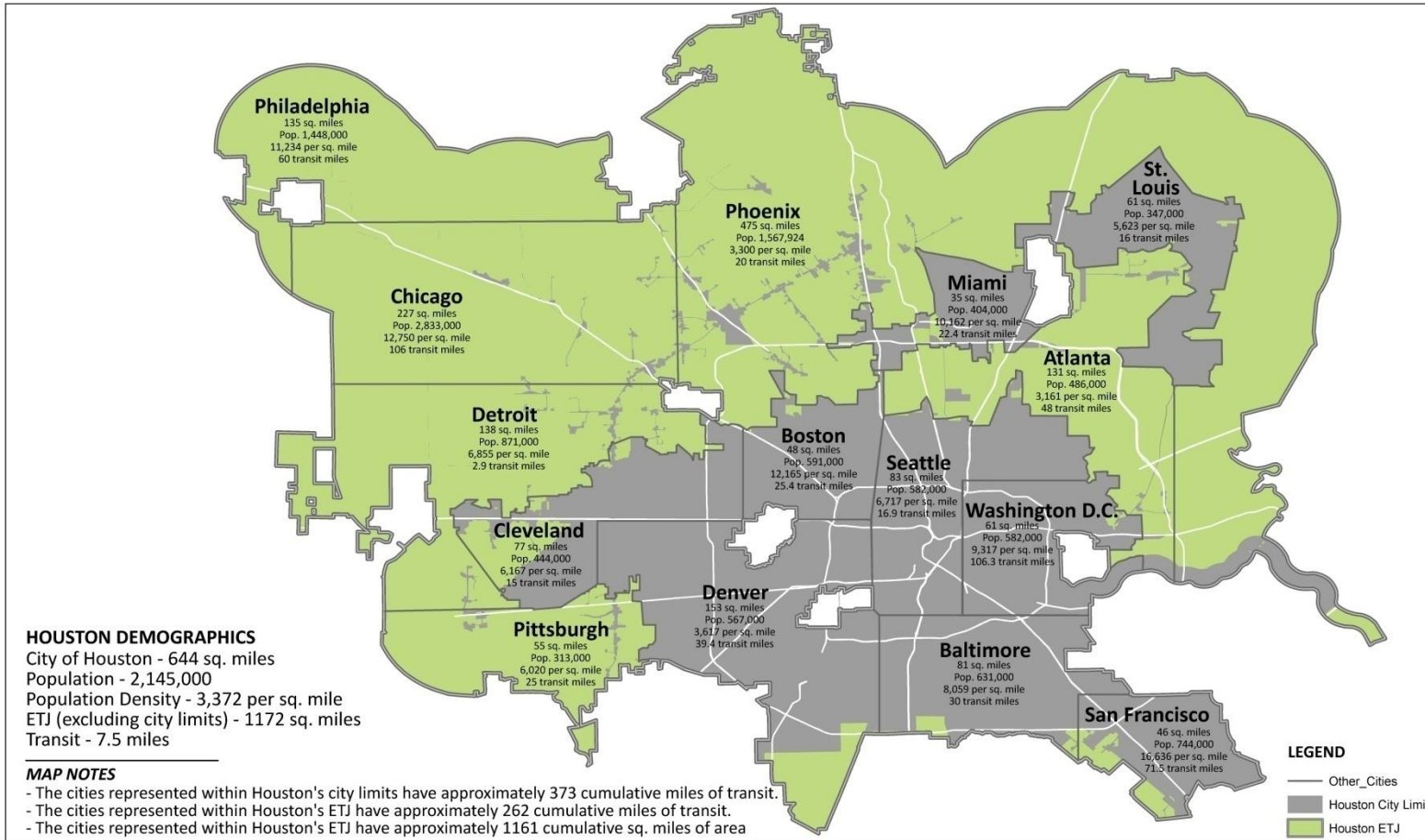
WHO IS NOT REPORTED AS HOMELESS FOR THE PIT ACCORDING TO HUD

- Persons incarcerated in jail or penitentiary
- Persons in hotels/bunk houses on self pay
- Persons in substance abuse treatment facility unless specifically designated homeless bed
- Wards of the state CPS
- Living with a family member or friend (doubled up)
- In permanent supportive housing
- In hospital beds or waiting rooms

ENUMERATION: POINT IN TIME COUNT

- Federally mandated count of homeless Point- in-Time (P-I-T) last ten days of January
- Must determine percent of vets, families with children, chronic homelessness
- Canvass all of Houston/Harris County/Fort Bend County
- Street Count and Sheltered Count

CITIES THAT FIT INTO HOUSTON & ETJ COMPARISON



LAND AREA COMPARISON : HOUSTON AND OTHER U.S. TRANSIT CITIES

Source: City of Houston, U.S. Census Bureau (2006 Population Estimates and 2000 Land Areas), Wikipedia



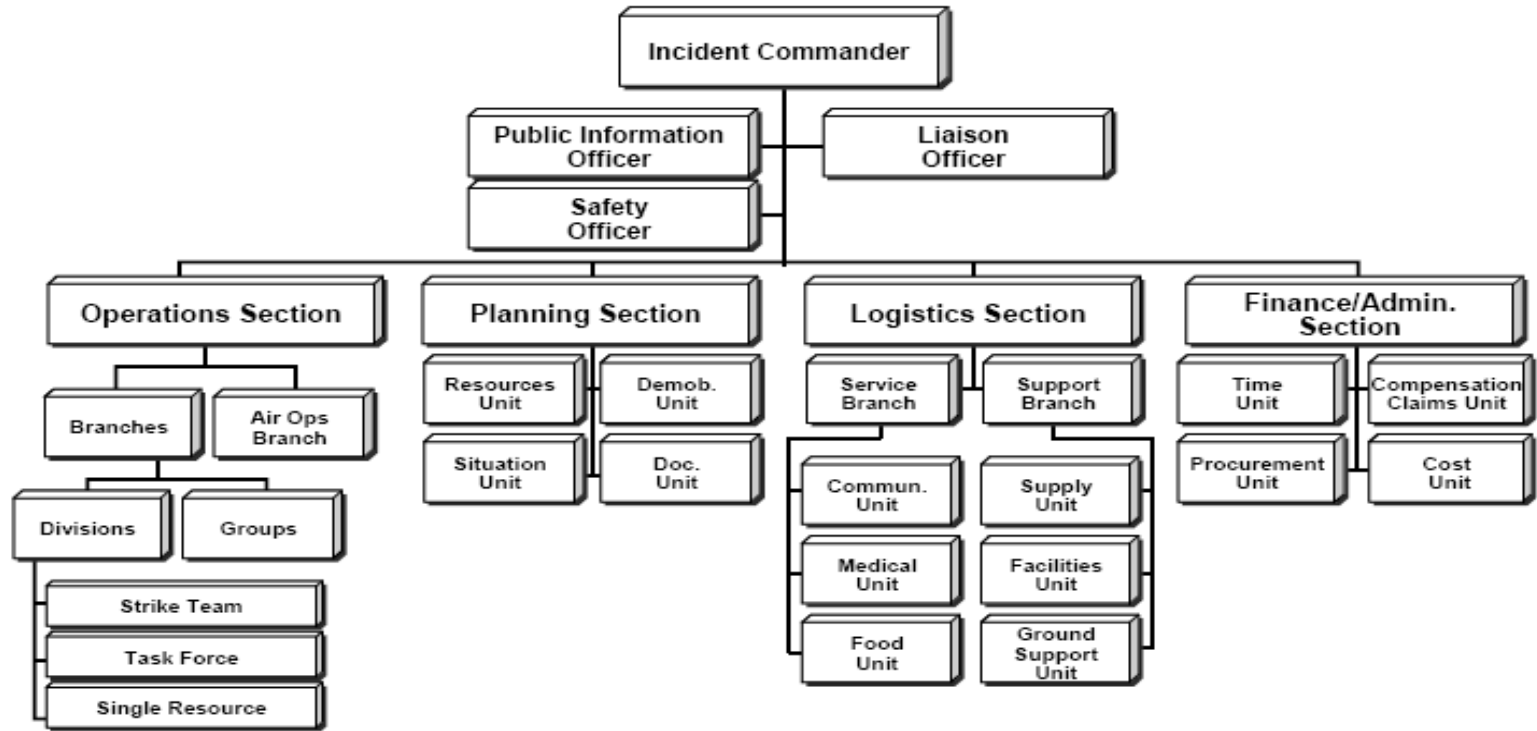
November 10, 2010



NEW METHODOLOGIES EMPLOYED

- ICS
- Joint effort between academia and community
- Just-in-Time training
- Plant and Capture method
- SWAT teams
- More staging areas/teams

INCIDENT COMMAND STRUCTURE



Hotwash held after each count

A JOINT ACADEMIC/COMMUNITY EFFORT

IC located at HDHHS

- IC – CFTH
- Deputy IC - UTSPH
- Planning Chief – HDHHS
- Operations Chief – HDHHS
- Logistics Chief – CFTH
- Finance/Admin – CFTH
- Safety officer – HDHHS/HPD
- Street teams – CFTH, UT, UH, and other students, other community orgs, HDHHS
- SWAT teams - HDHHS



COMMUNITY ENGAGEMENT

- Continuum of Care housing providers
- Service Providers
- Consumers, CAC, and Corps
- Schools
- Faith -based community
- Specialized outreach teams
- Special sub-populations
- Citizen Corps
- Student group
- Public officials
- Citizen groups and organizations
- Homeless and formerly homeless veterans



P-I-T: WAYS WE COUNTED

- Surface teams
- Specialized outreach teams
- Shelter count using HMIS
- Next day interviews to determine make-up of population

SURFACE TEAMS

- Ten staging areas – Houston/Harris Co/Ft. Bend Co/Baytown
- ~ 30 map areas
- ~ 80 teams
- Each car had:
 - Driver
 - Navigator
 - Homeless guide
 - Recorder

OUTREACH SPECIALIST TEAMS

- Sub-population specialists
- Canvassed encampments, under bridges, off surface surveillance
- Interviews and engagement

SHELTER COUNT

- HMIS data confirmed for each housing provider for night of the count
- DV and non-HMIS shelter data confirmed through self-report
- Utilize expanded CoC including faith based programs
- Calls made to shelters to verify
- Information obtained on clients using the shelter

P-I-T INTERVIEWS

Service providers

- Day shelter
- Food services providers

Outreach specialist

Street interviews

WHAT WE KNOW ABOUT THE HOMELESS IN HOUSTON

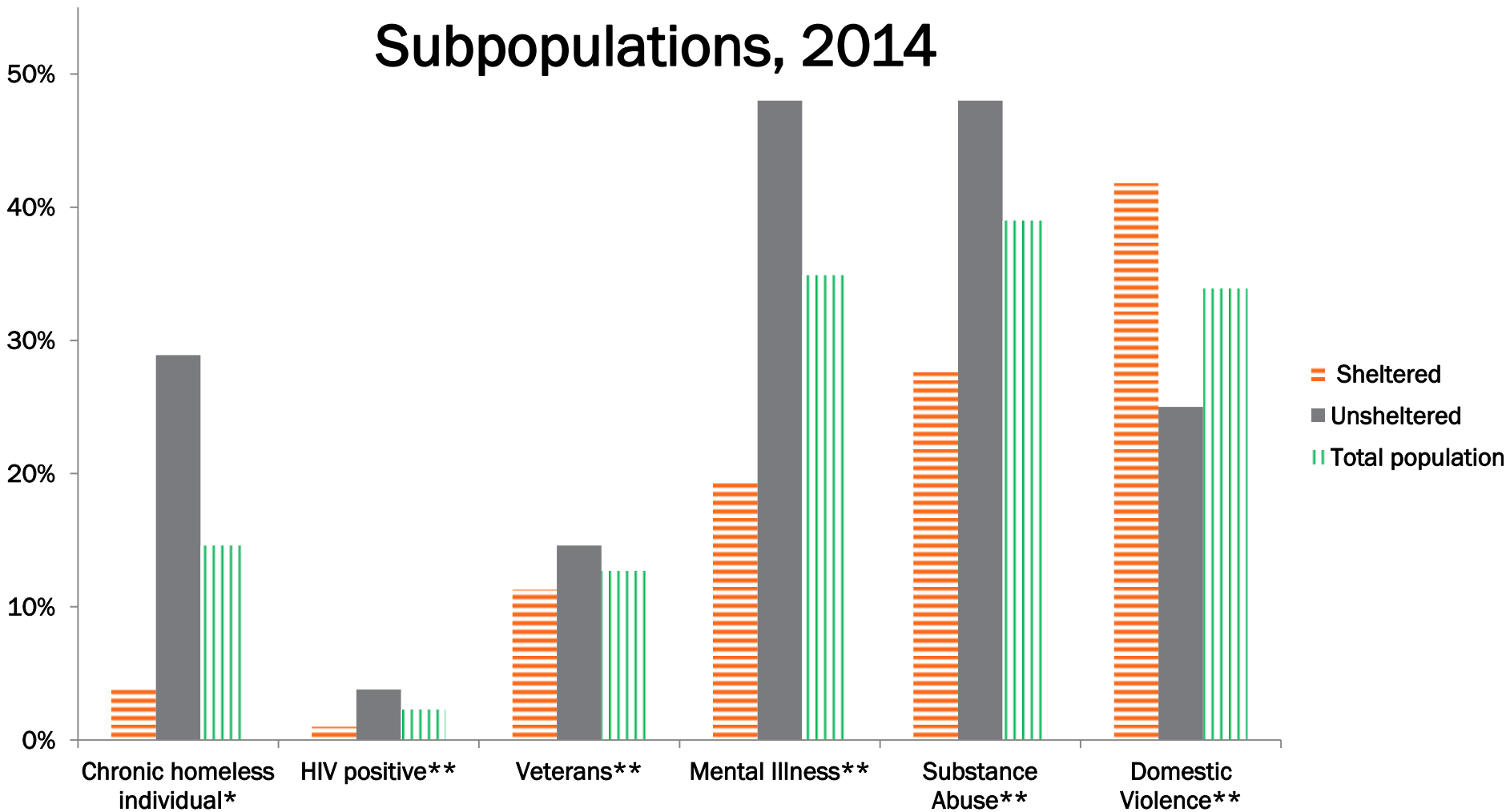
On January 30 2014, there were 5,351* people experiencing homeless in Houston/Harris County

- Approximately 1 in 7 identified as chronically homeless individual
- Only 2 individuals were identified as members of a chronically homeless family
- 1 in 3 had substance abuse problems
- 2 in 5 had mental health issues
- 1 in 8 was a veteran

*HUD definition



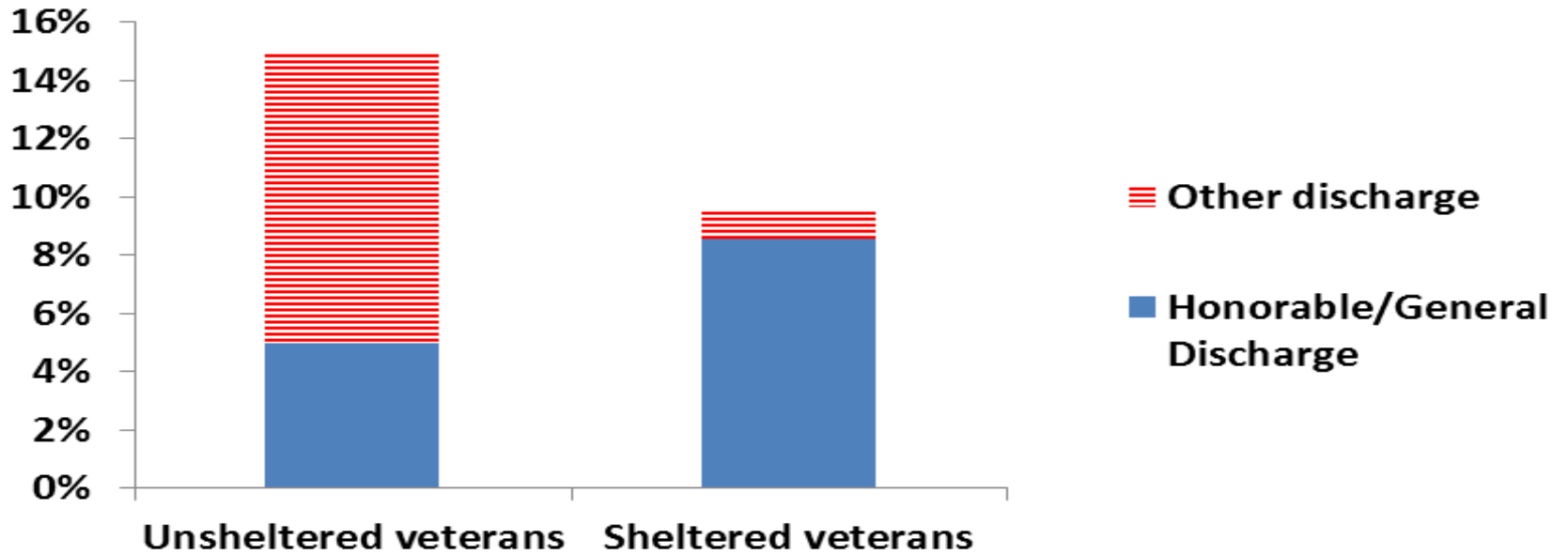
Subpopulations, 2014



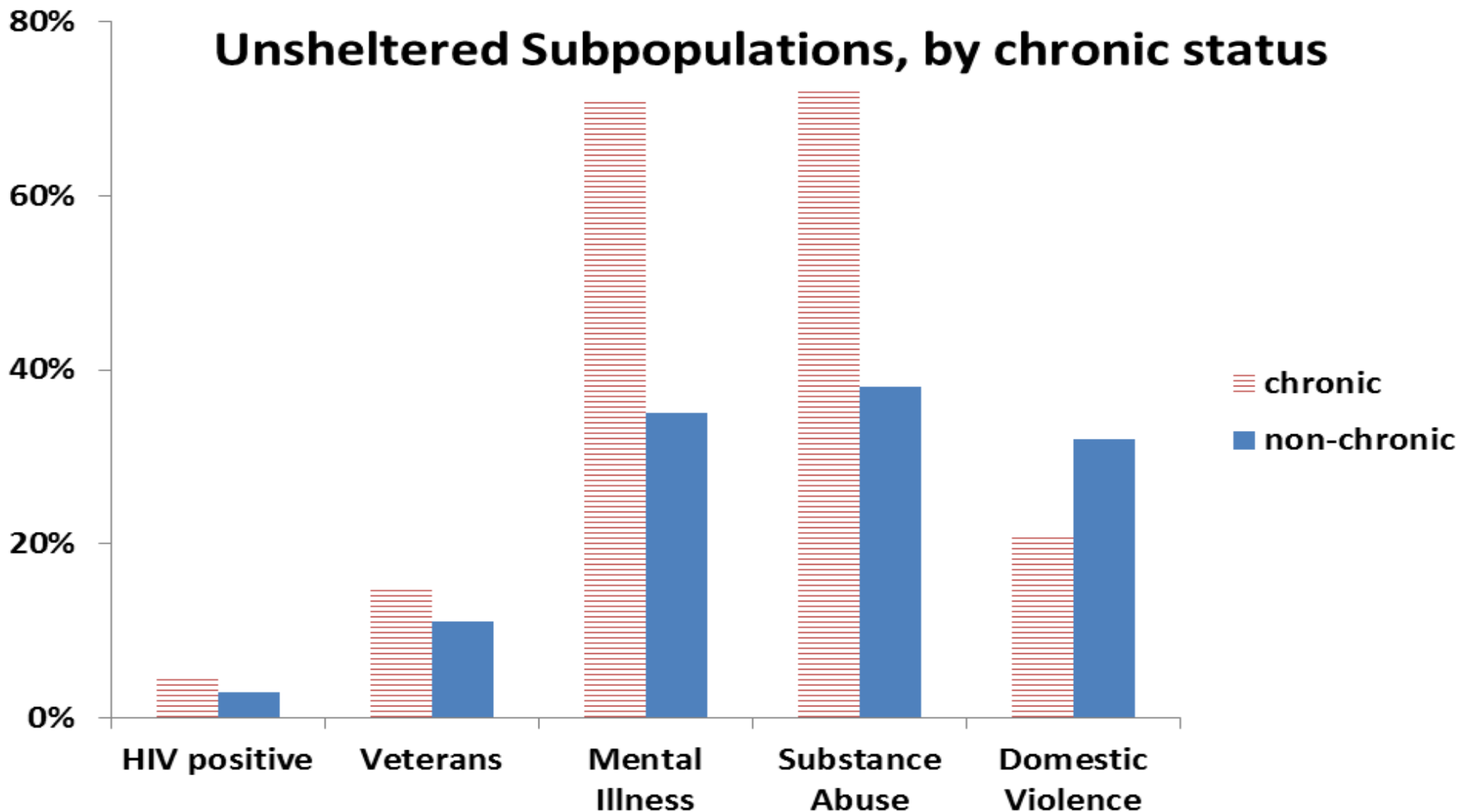
*** only sheltered individuals in emergency shelters can be considered chronically homeless**

**** among adults only**

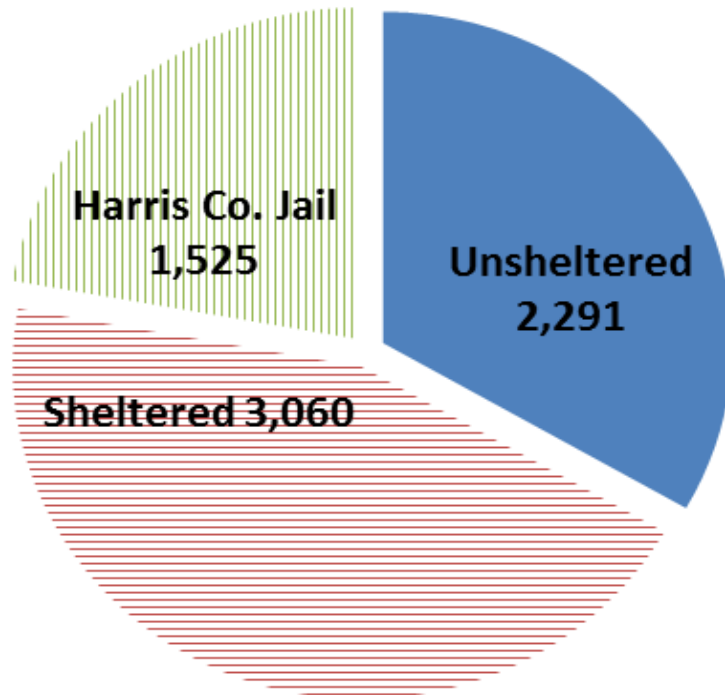
Military Discharge Status



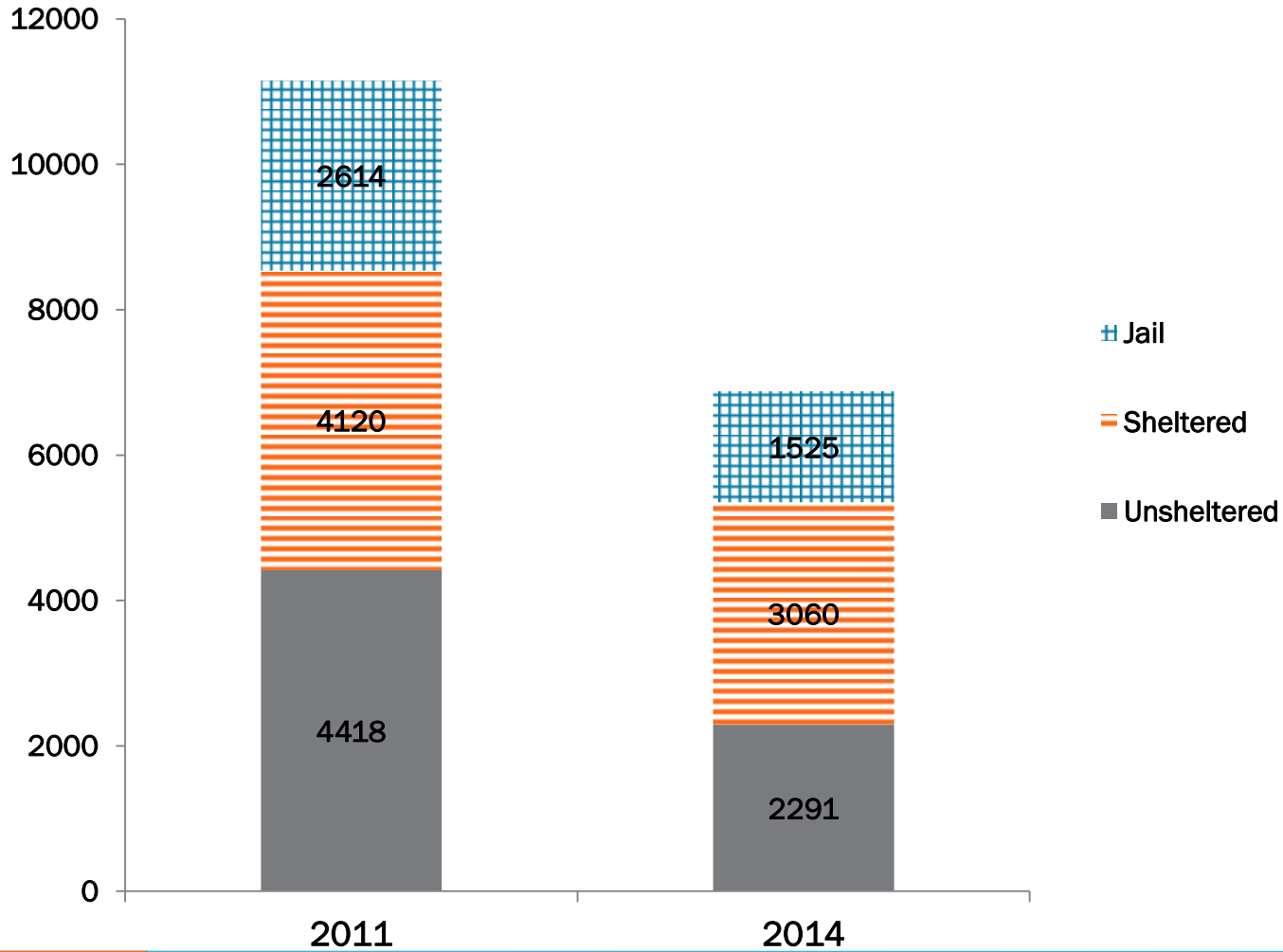
Unsheltered Subpopulations, by chronic status



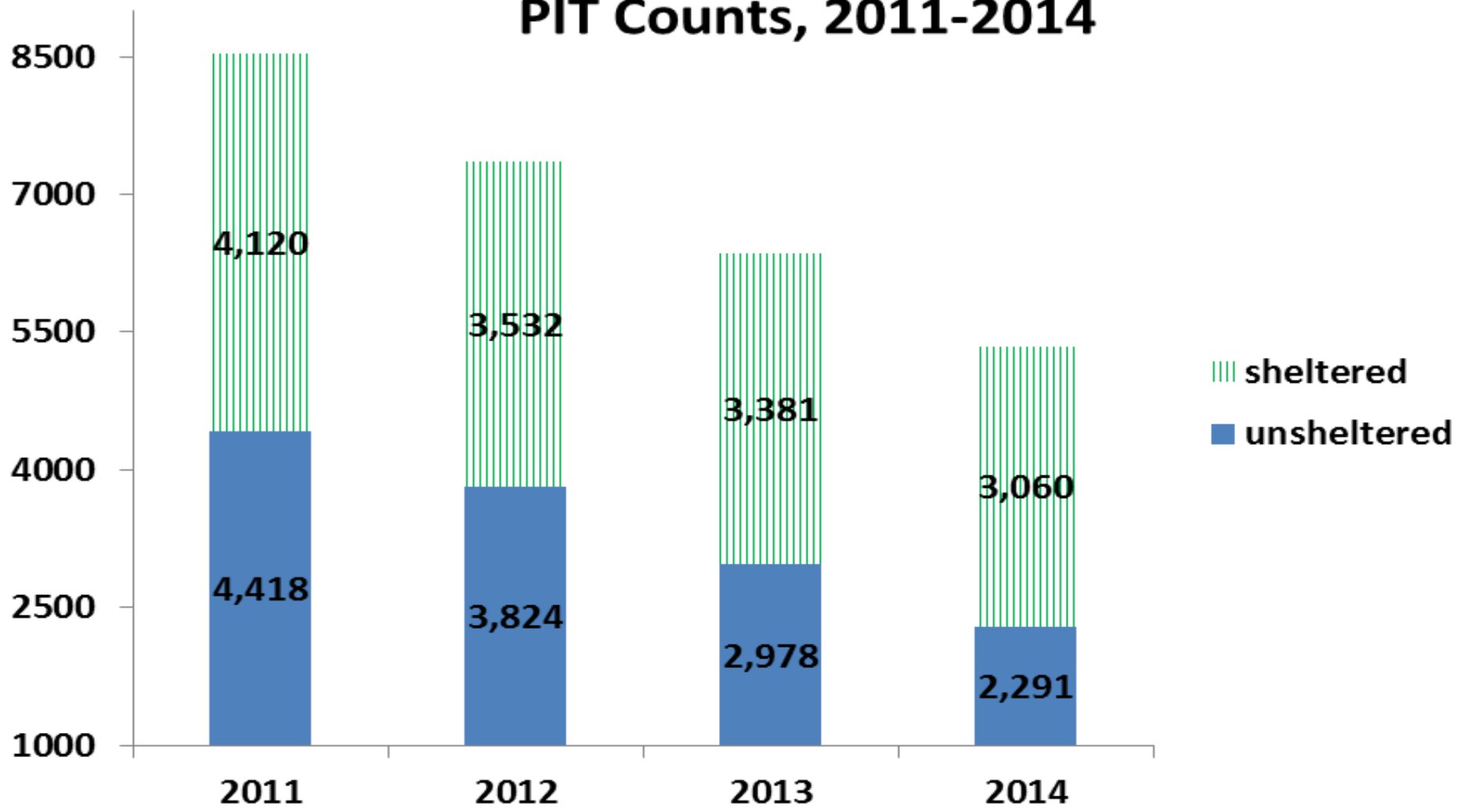
Expanded Homeless in Houston/Harris/ Ft. Bend Counties, 2014 (n=6,876)



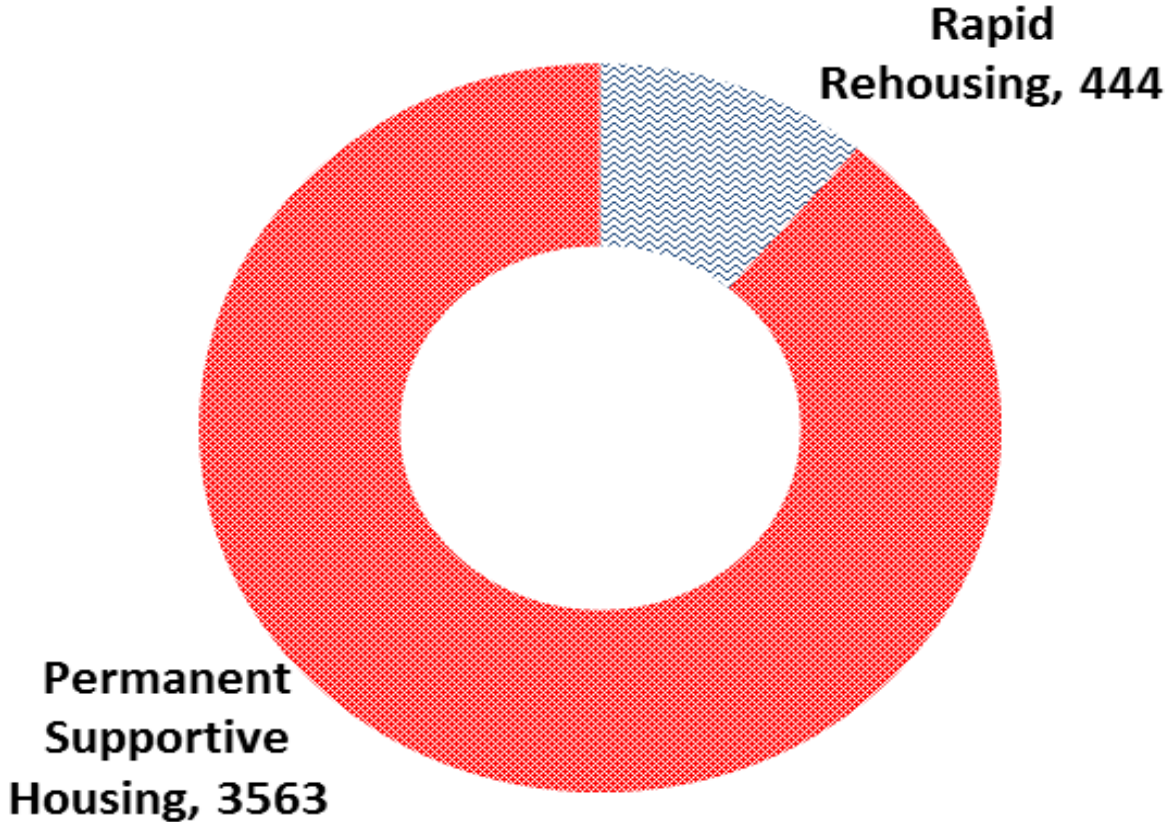
Total Homeless, 2011 and 2014



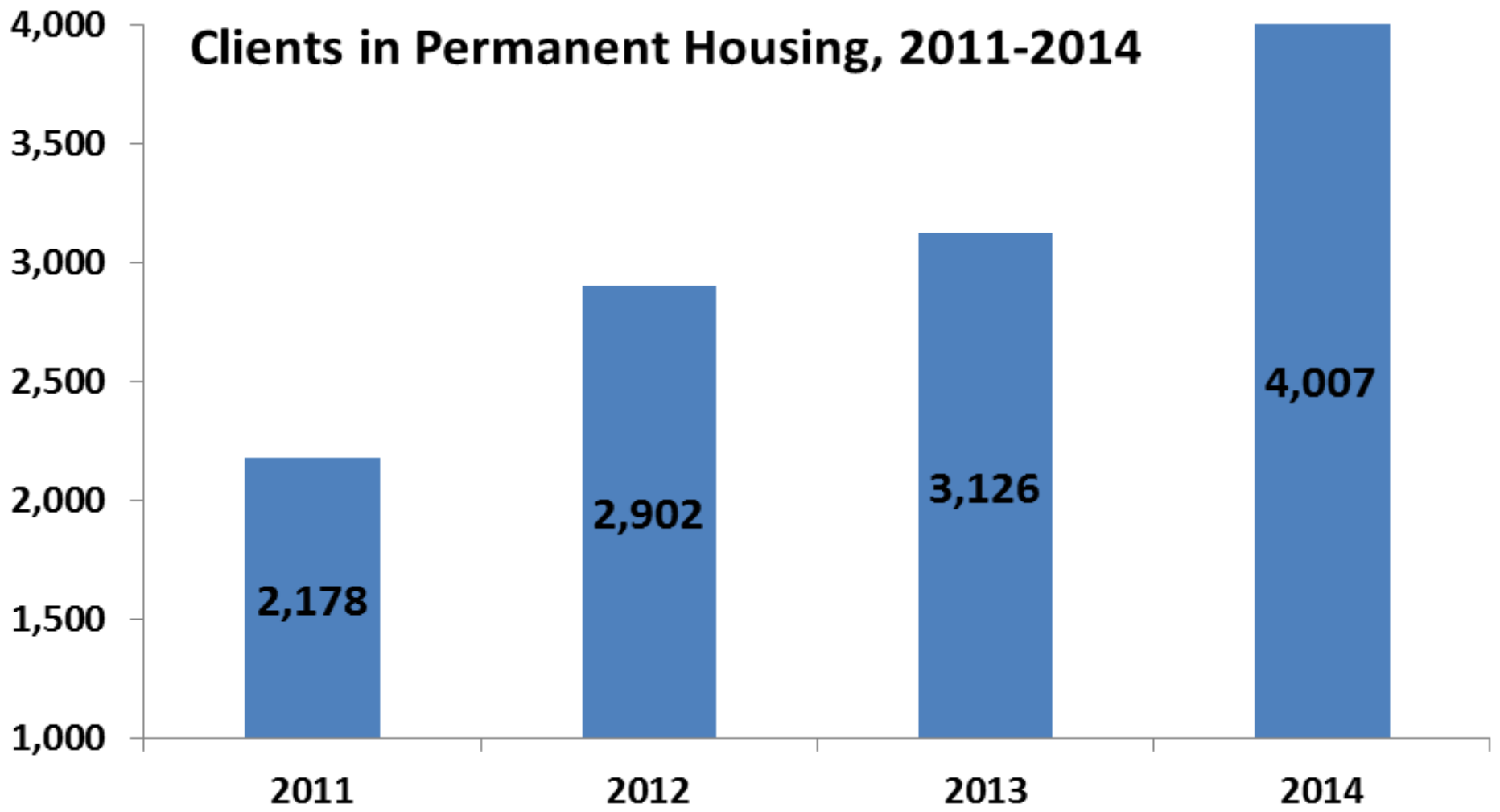
PIT Counts, 2011-2014



2014 Clients in Permanent Housing, n=4,007



Clients in Permanent Housing, 2011-2014



SUMMARY

- **5,351 persons experiencing homeless were counted**
 - 2,291 (43%) staying place not meant for human habitation
 - 3,060 (57%) staying in emergency shelters, transitional housing, or safe haven that evening.
 - **Expanded definition - 6,876 individuals**
 - **2014 PIT count represents:**
 - 16% decrease compared to 2013
 - 37% decrease compared to 2011
 - **Increase in number in PSH**
 - 28% increase compared to 2013
 - 81% increase compared to 2011
 - **Significant percent have mental health and/or substance abuse issues**
- 